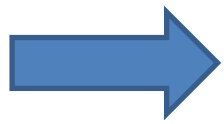


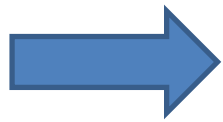
## Colorado's “Race to the Top”

Revised Plan Summary  
December 28, 2009

Colorado's Race to the Top proposal will create **exemplary and sustainable learning communities to drive dramatic improvements in student outcomes** by investing in...



Educator capacity and supports

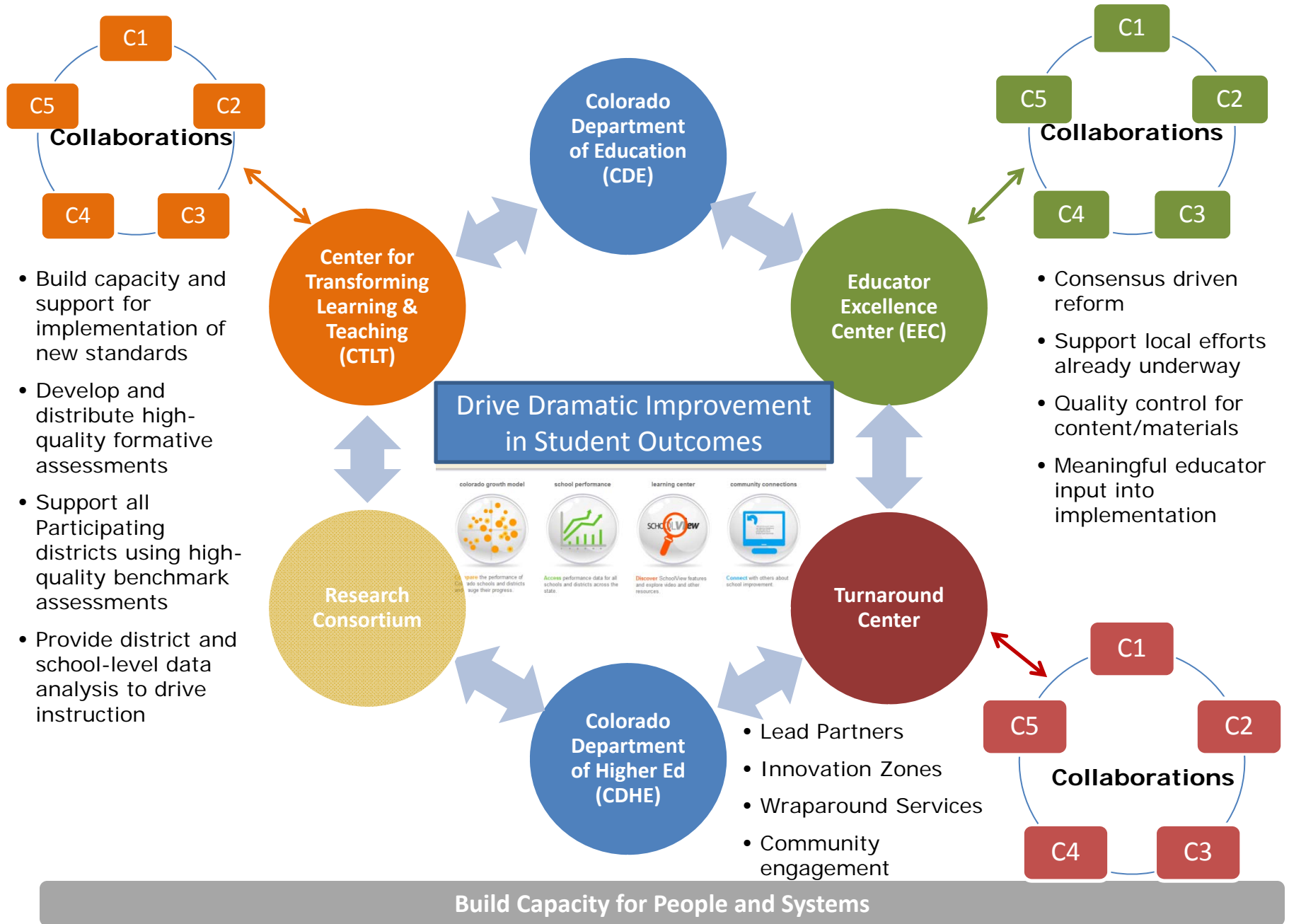


Incentives for collaboration, results and knowledge capture



Opportunities for innovation

# Data & Standards Driven Learning Communities



**Colorado's Race to the Top proposal will create **exemplary and sustainable learning communities** to drive **dramatic improvements in student outcomes** by investing in:**

- Educator capacity and supports
- Incentives for collaboration, results and knowledge capture
- Opportunities for innovation

**Standards and Assessment**

- Deliver support to implement new content standards
- Aid in the adoption of Formative Assessments to drive instruction
- Support adoption of Interim Benchmark Assessments to monitor progress

**Data Systems**

- Create a comprehensive electronic portal (SchoolView) for support of new standards and sharing of education content
- Ensure district capacity to implement systems
- Foster a data-driven culture to speed adoption of best practices

**Great Teachers and Leaders**

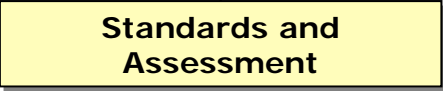
- Develop and implement robust educator evaluation systems
- Recognize and reward innovation and excellence
- Ensure students with greatest needs have access to effective educators

**Support Struggling Schools**

- Build CDE capacity to support struggling schools
- Enable a Turnaround Center to support schools and districts with struggling schools

Colorado's Race to the Top proposal will create **exemplary and sustainable learning communities** to drive **dramatic improvements in student outcomes** by investing in:

- Educator capacity and supports
- Incentives for collaboration, results and knowledge capture
- Opportunities for innovation

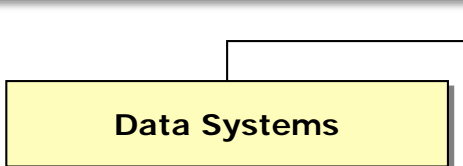


**Standards and  
Assessment**

- **Deliver support to implement new content standards**
  - Inter-district collaboratives that support aligned curricula, and develop/choose assessments
  - Provide differentiated support to spread the development of standards-based data-driven instruction
  - Disseminate aligned curricula for voluntary use
- **Aid in the adoption of Formative Assessments to drive instruction**
  - Disseminate aligned formative items
  - Ensure high-quality formative assessments for all Participating districts
- **Support adoption of Interim Benchmark Assessments to monitor progress**
  - Develop and make available state-sponsored interim benchmark assessments
  - Ensure high-quality interim assessments for all Participating districts

Colorado's Race to the Top proposal will create **exemplary and sustainable learning communities** to drive **dramatic improvements in student outcomes** by investing in:

- Educator capacity and supports
- Incentives for collaboration, results and knowledge capture
- Opportunities for innovation



**Data Systems**

- **Create a comprehensive electronic portal (SchoolView) for support of new standards and sharing of education content**
  - Build instructional improvement systems
  - Make available digital course content
  - Facilitate peer-to-peer educator collaboration
  - Support statewide sharing of best practices and data use among stakeholders
  - Create interface for high-quality 3rd party providers to connect with classrooms
- **Ensure district capacity to implement systems**
  - Subsidize district purchases of SIS (Student Information Systems)
  - Create early-warning systems
- **Foster a data-driven culture to speed adoption of best practices**
  - Connect and empower data analysis leaders within districts and schools
  - Provide district, school and classroom data analysis and training on using data to inform instruction and decisions
  - Capture innovative data practices at school/district level and share widely

**Colorado's Race to the Top proposal will create **exemplary and sustainable learning communities** to drive **dramatic improvements in student outcomes** by investing in:**

- Educator capacity and supports
- Incentives for collaboration, results and knowledge capture
- Opportunities for innovation

**Great Teachers and Leaders**

**Develop and implement robust educator evaluation systems**

- Identify valid measures of student growth and valid, reliable, fair and rigorous evaluation measures
- Meaningful input of educators and consensus driven recommendations for policy and practice changes
- Provide a portfolio of options for meaningful educator evaluation among participating districts
- Accelerate and learn from existing reforms
- Locally-driven implementation of meaningful evaluations
- Professional development directly informed by evaluations
- Administer bi-annual TELL survey of school conditions

**Recognize and reward innovation and excellence**

- Engage in continuous improvement and knowledge management to support educator effectiveness through an independent Educator Excellence Center
- Incent districts to develop and implement performance based compensation
- Create multiple career paths for effective educators
- Peer to peer sharing of effective instructional practice

**Ensure students with greatest needs have access to effective educators**

- Create residencies at high-performing schools for instructional leadership teams
- Incent endorsements in high-need subjects
- Correlate educator preparation with educator effectiveness
- Increase pipeline of effective new educators for high need schools and subjects through multiple partnerships
- Increase the # of AP and pre-AP teachers in high-poverty/high-minority schools

Colorado's Race to the Top proposal will create **exemplary and sustainable learning communities** to drive **dramatic improvements in student outcomes** by investing in:

- Educator capacity and supports
- Incentives for collaboration, results and knowledge capture
- Opportunities for innovation

**Support Struggling Schools**

- **Build CDE capacity to support struggling schools**
  - Identify struggling schools
  - Support district implementation of intervention models
  - Broker resources and information among turnaround schools
- **Enable a Turnaround Center to support schools and districts with struggling schools**
  - Build pipeline of educators for turnaround schools
  - Identify effective school turnaround providers
  - Support "Innovation Zones" for clusters of high-need schools and students
  - Identify and support "wrap around support" such as
    - Strategies to engage students, parents and community
    - Extended learning time
    - Early childhood education
    - Dropout prevention and recovery
    - School governance
  - Create new and replicate existing high performing schools, with a focus upon high-quality multiple pathways